

Specification sheet LX 620

Parapet drainage system

Series 43 Parapet-Direct

for small roof areas

Main drainage

Gravity flow

Silent

Discharge rate:	0.8 l/s
Water height:	35 mm
Roof penetration:	0 mm
Diameter:	DN 70
LX-Number:	LX 620
Weir height:	0 mm
Drain:	ventilated
Downpipe:	ventilated
Downpipe height:	4.2 m
Drainage:	in sewer
Flange form:	bonding flange

LX 620 Piece list

1 x Art.-No. choose drain on page two!

1 x Art.-No. 01301.070X, LORO-X Pipe with one socket

1 x Art.-No. 13235.070X, LORO Sliding flange

1 x Art.-No. 00200.CC0X, LORO-X Branch

1 x Art.-No. 01001.070X, LORO-X Pipe with one socket

1 x Art.-No. 13217.070X, Ventilation piece

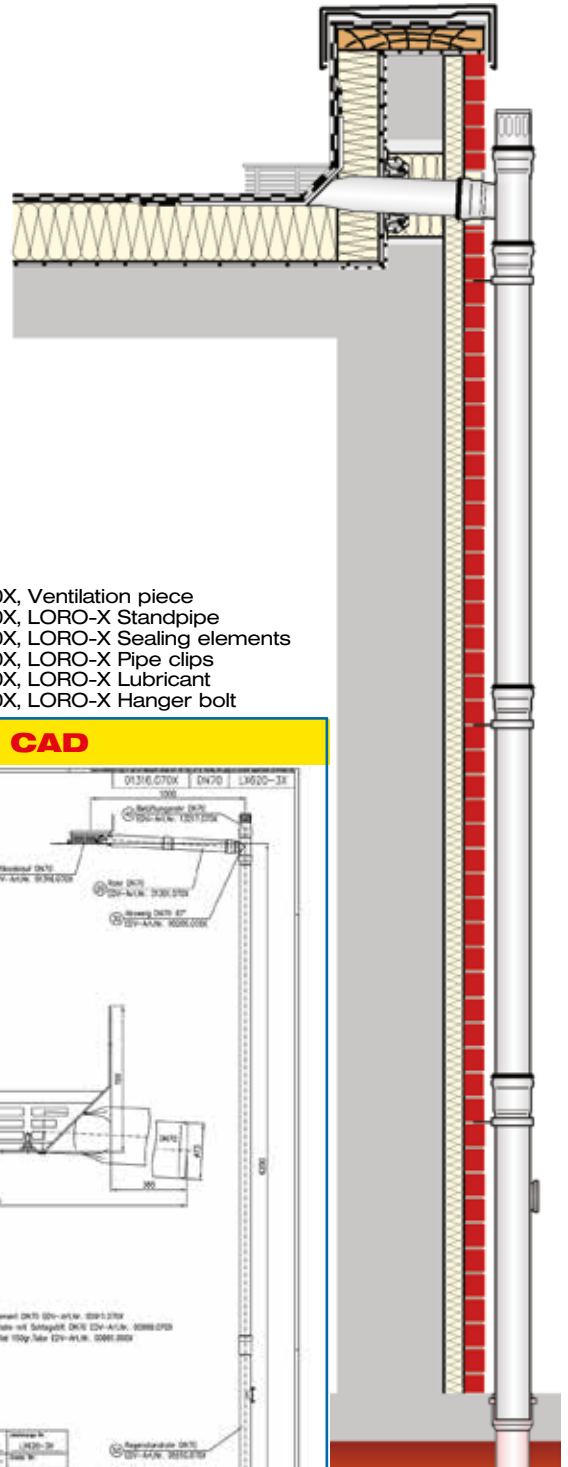
1 x Art.-No. 05510.070X, LORO-X Standpipe

5 x Art.-No. 00911.070X, LORO-X Sealing elements

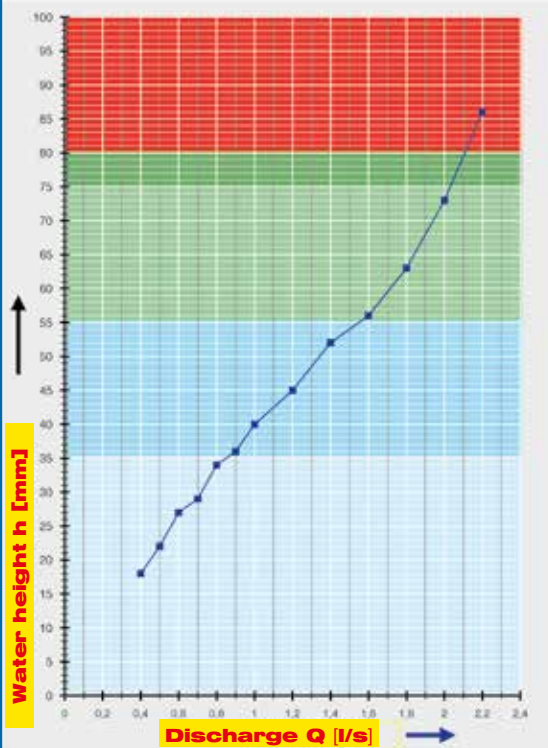
3 x Art.-No. 00973.070X, LORO-X Pipe clips

1 x Art.-No. 00986.000X, LORO-X Lubricant

3 x Art.-No. 09603.200X, LORO-X Hanger bolt

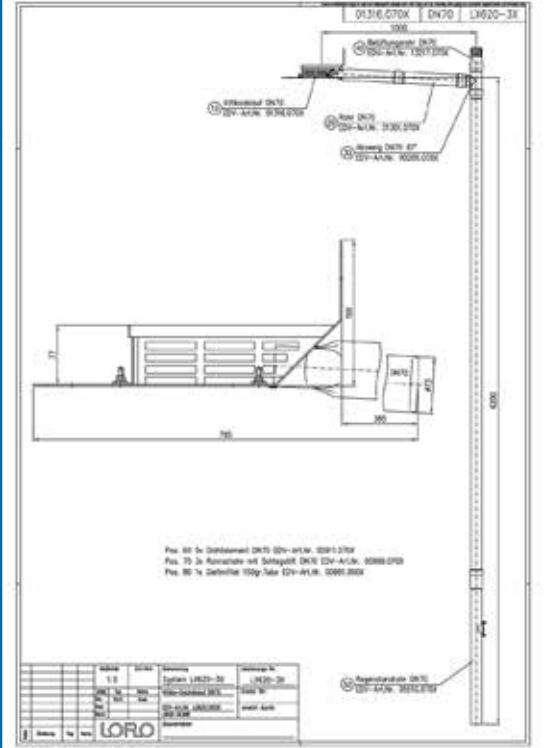


hQ - Discharge curve



System power

CAD



System shape

Water height	mm	5	10	15	20	25	30	35	40	45	50	55	60	65	70	75
Discharge	l/s				0.4	0.5	0.7	0.8	1	1.2	1.3	1.6	1.7	1.8	1.9	2.1
Silent																

Chosse drain for piece list on page one!

DN 70

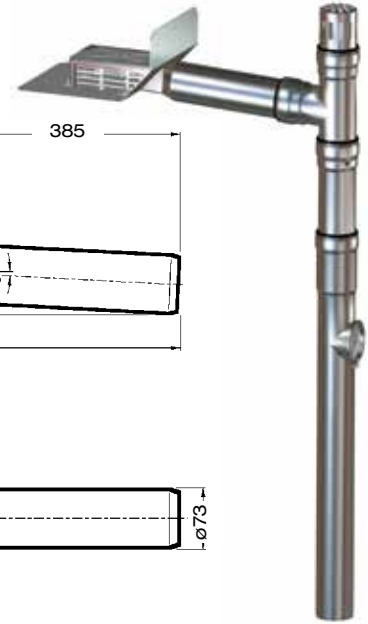
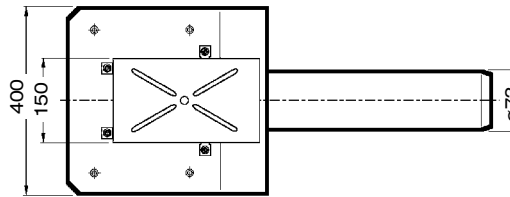
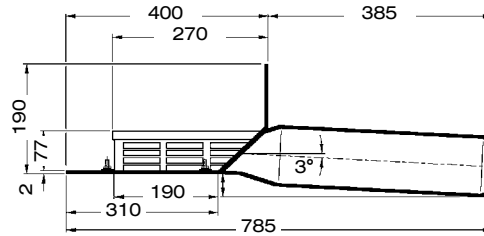
LX620-3X

Series 43

Drain Art.-No. 01316.070X

Weight: 5.7 kg

with bonding flange
for bituminous roofing sheets

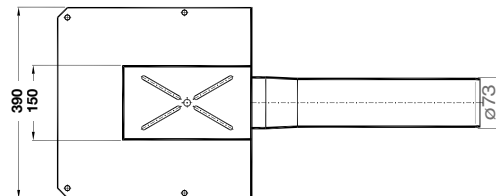
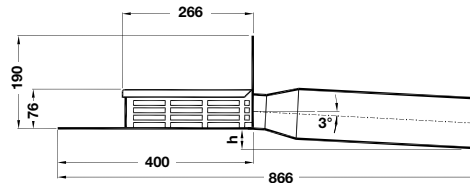


LX620-21X

Series 43

Drain Art.-No. 01331.070X

with bonding flange 90 degree
for liquid plastic

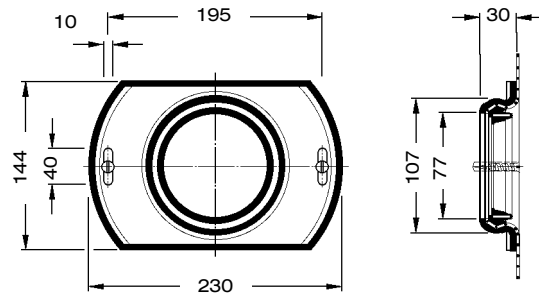


Sliding flange for LORO parapet direct drains

with pre-installed connection sleeve for vapor barrier made of bituminous roofing sheets, made of galvanized steel, including fastening screws

Art.-No. 13235.070X

Weight: 1.4 kg



Trace heating: Lorowerk recommends to check all drains and pipes with regard to their frost-sensibility. Where necessary, these parts should be equipped with a trace heating.